

Optimized for heavy loads on every road



MPS 300 Maxilla AP For transporters and vans

- ▶ Better overall durability
- ▶ Really robust construction
- ▶ Extra mileage and protection

www.matador-tyres.com

MPS 300 Maxilla AP

For transporters and vans

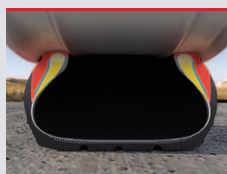


Technical Highlights



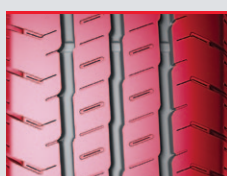
Better overall durability

The optimised sipe concept of the pattern and the reduced number of sipes provide very good protection against cuts and chips to increase the durability of the pattern.



Really robust construction

Optimal stiffness distribution among the elements and robust construction increase the tyre's load capacity and extend its service life.

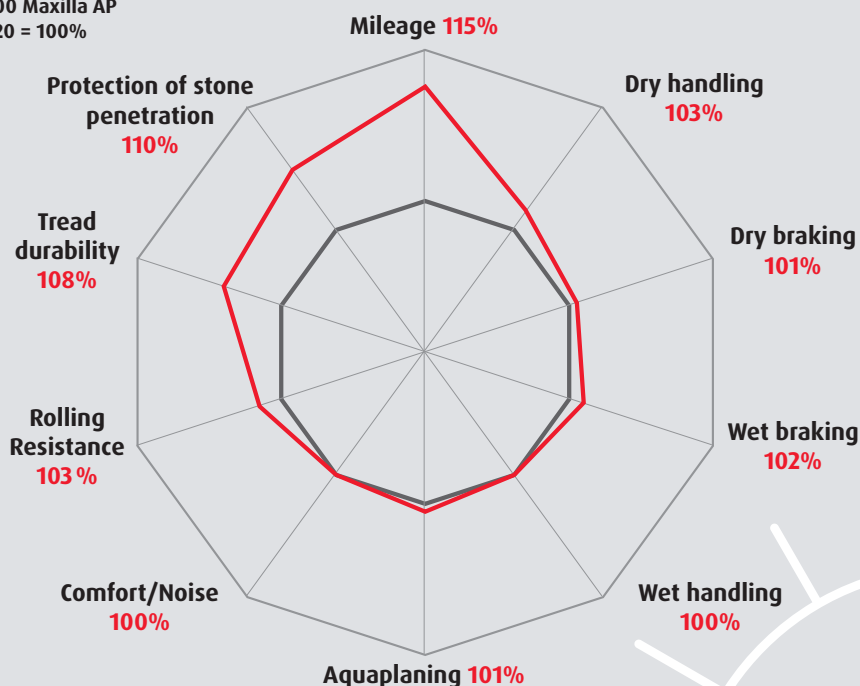


Extra mileage

The optimised pattern design and compound give the tyre better mileage performance and protection against stone penetration.

Performance Diagram

— MPS 300 Maxilla AP
— MPS 320 = 100%



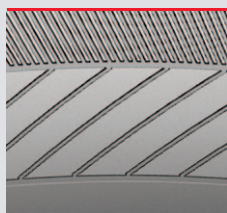
Size Range

Size	LI single / dual mounted	SI	EU tyre label			
						
14"						
185 R 14 C	102/100	Q	E	B	72	2
195 R 14 C	106/104	Q	E	B	72	2
205 R 14 C	109/107	P	E	B	72	2
215 R 14 C	112/110	P	E	B	72	2
15 "						
195/70 R 15 C	106/104	R	E	B	72	2
205/70 R 15 C	106/104	R	E	B	72	2
215/70 R 15 C	109/107	R	E	B	72	2
225/70 R 15 C	109/107	R	E	B	72	2
225/70 R 15 C	112/110	R	C	B	72	2
16 "						
185/75 R 16 C	107/105	R	E	B	72	2
205/75 R 16 C	110/108	R	E	B	72	2
235/65 R 16 C	115/113	R	C	B	72	2

Sidewall Features

Scuff Ribs

Scuff rib with an additional rubber layer on the sidewall provides protection in the scuff prone area and thus guarantees extended tyre life.



Scuff Ribs



Suffix "Matador"



Suffix "Maxilla AP"
(AP - All Purpose)



Suffix "MPS 300"