

Strong in winter



MP92 Sibir Snow For middle-class and luxury vehicles

- ▶ Improved traction and braking on snow
- ▶ Improved braking on wet roads and good safety against aquaplaning
- ▶ Better handling on wet roads

Matador. A brand of Continental.

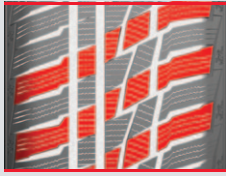
 **Matador**[®]

MP92 Sibir Snow

For middle-class and luxury vehicles and SUVs

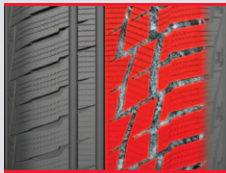


Technical Highlights



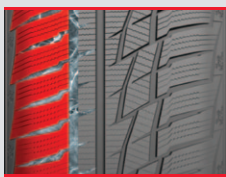
Improved traction and braking on snow

The chunky zigzag „Z” design of the tread pattern is made up of numerous lateral grooves and gripping edges. This means more snow can be picked up, resulting in better grip from the tread. The high number of gripping edges results in good performance on snow, improving both traction and braking performance.



Improved braking on wet roads and good safety against aquaplaning

The tread pattern of the inner part of the tyre as far as the shoulder is designed to be open, balancing with the two ribs running around the circumference. The increased water dispersal improves braking on wet roads and aquaplaning performance.

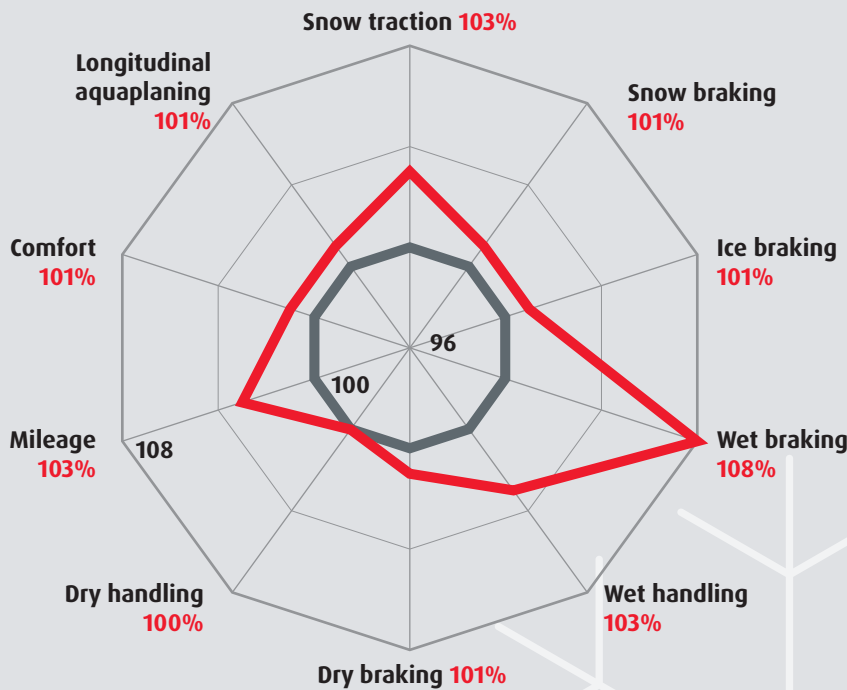


Better handling on wet roads

Compact outer shoulder blocks in combination with the new sipe technology ensure good lateral tread rigidity. This results in better handling in wet conditions and improved steering response on wintry roads.

Performance diagram

- MP92 Sibir Snow
- MP91 Nordicca = 100%



Size range

Size	LI	SI	EU tyre label				
			Fuel consumption	Wet grip	dB	Class	Rim protection
15"							
185/65 R 15	88	T	F	C	71	2	
185/65 R 15 XL	92	T	F	C	71	2	
195/65 R 15	91	T	F	C	71	2	
195/65 R 15	91	H	F	C	71	2	
195/65 R 15 XL	95	T	F	C	71	2	
205/65 R 15	94	T	F	C	71	2	
205/65 R 15	94	H	F	C	71	2	
185/60 R 15	84	T	F	C	71	2	
185/60 R 15 XL	88	T	F	C	71	2	
195/60 R 15	88	T	F	C	71	2	
195/60 R 15	88	H	F	C	71	2	
205/60 R 15	91	T	F	C	71	2	
205/60 R 15	91	H	F	C	71	2	
185/55 R 15	82	T	F	C	71	2	
185/55 R 15 XL	86	H	F	C	71	2	
195/55 R 15	85	T	F	C	72	2	
195/55 R 15	85	H	F	C	72	2	
195/50 R 15	82	T	F	C	72	2	
195/50 R 15	82	H	F	C	72	2	
16"							
205/60 R 16	92	H	F	C	71	2	
215/60 R 16 XL	99	H	F	C	71	2	
195/55 R 16	87	H	F	C	71	2	
205/55 R 16	91	T	F	C	71	2	
205/55 R 16	91	H	F	C	71	2	
205/55 R 16 XL	94	H	F	C	71	2	
205/55 R 16 XL	94	V	F	C	71	2	
215/55 R 16	93	H	F	C	71	2	
215/55 R 16 XL	97	H	F	C	71	2	
225/55 R 16	95	H	F	C	71	2	
225/55 R 16 XL	99	H	F	C	71	2	
17"							
225/55 R 17 XL	101	V	F	C	71	2	
205/50 R 17 XL	93	H	F	C	71	2	
225/50 R 17 XL	98	V	F	C	71	2	
225/45 R 17	91	H	F	C	71	2	
225/45 R 17 XL	94	V	F	C	71	2	
235/45 R 17 XL	97	V	F	C	71	2	
245/45 R 17 XL	99	V	F	C	71	2	
18"							
245/45 R 18 XL	100	V	F	C	71	2	
225/40 ZR 18 XL	92	V	F	C	71	2	
245/40 ZR 18 XL	97	V	F	C	71	2	

XL = EXTRA LOAD - tyre with increased loadability | LI = Load index | SI = Speed index | EU tyre label categories: Fuel consumption, Wet grip, dB = Value in decibels, Class | Rim protection