

# Freedom, in any terrain!



## **MP72 Izzarda A/T 2**

FOR SUVs AND PICKUP TRUCKS

- ▶ Traction like never before
- ▶ High level of damage resistance in off-road conditions
- ▶ Significantly enhanced noise cancelling and ride comfort

[www.matador-tyres.com](http://www.matador-tyres.com)

Matador. A brand of Continental.

 **Matador**<sup>®</sup>

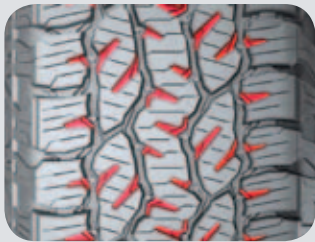
# MP72 Izzarda A/T 2

EXCELLENT ALL-TERRAIN TRACTION AND OFF-ROAD DURABILITY

M+S



## Technical Highlights



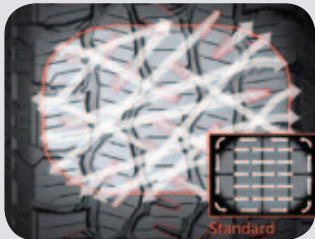
### Traction like never before

The new multi-angle and terraced traction notches provide numerous gripping edges. This results in improved off-road traction even on loose surfaces. Alternating shoulder scoops guarantee enhanced self-cleaning action.



### High level of damage resistance in off-road conditions

Robust tread blocks in combination with stabilized block edges reduce block pressure. This leads to outstanding resistance to block damage even under heavy load.



### Significantly enhanced noise cancelling and ride comfort

Tread blocks with varying angles ensure a comfortable and quiet ride at all times.

## Protection Features



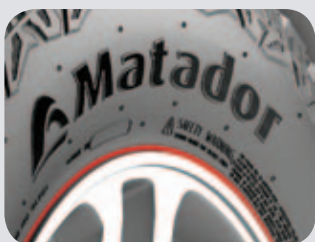
### Stone bumpers

New stone bumpers with extension wings provide excellent protection against stone reflection and drilling. This reduces tyre damage from stones.



### Sidewall lugs

Large sidewall lugs on the upper sidewall protect the tyre body from stones, rocks and debris.



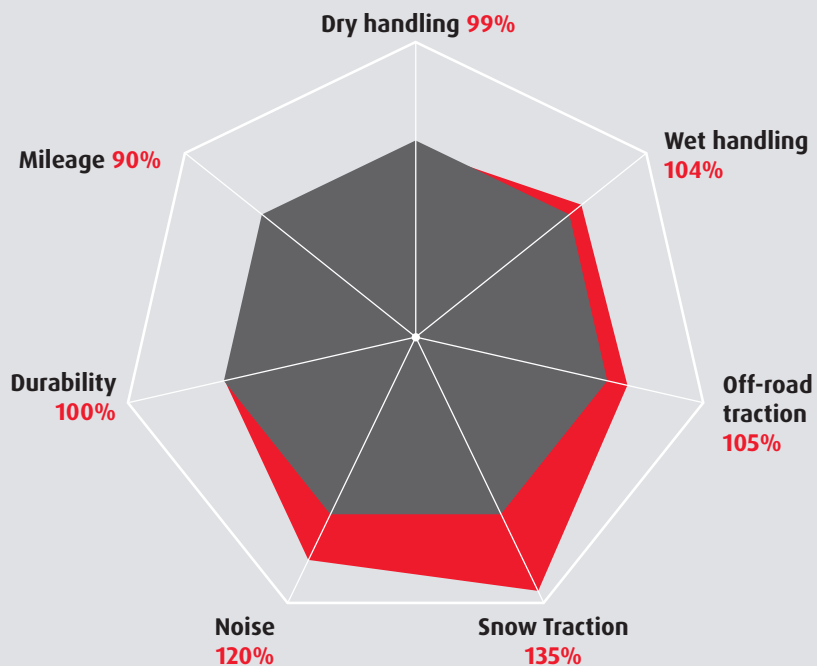
### Rim protection rib

The rim protection rib protects the tyre and wheel bead area from damage caused by curbstone and off-road obstacles.



## Performance Diagram

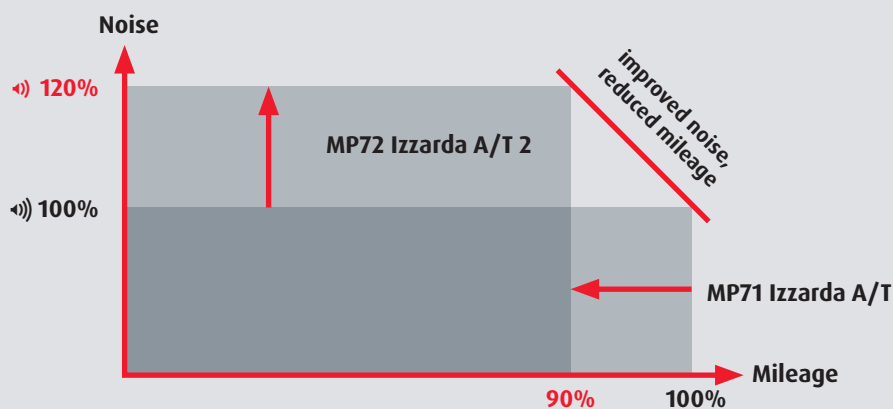
- MP72 Izzarda A/T 2
- MP71 Izzarda = 100%



## Graph № 1

Obligatory changes to comply with noise legislation have reduced mileage, but tyres are still highly competitive.

Note: According to the regulation UNECE R117-02, the tires with 3 sound waves that are produced after November 2016 will not be allowed to be sold in countries using EU label.

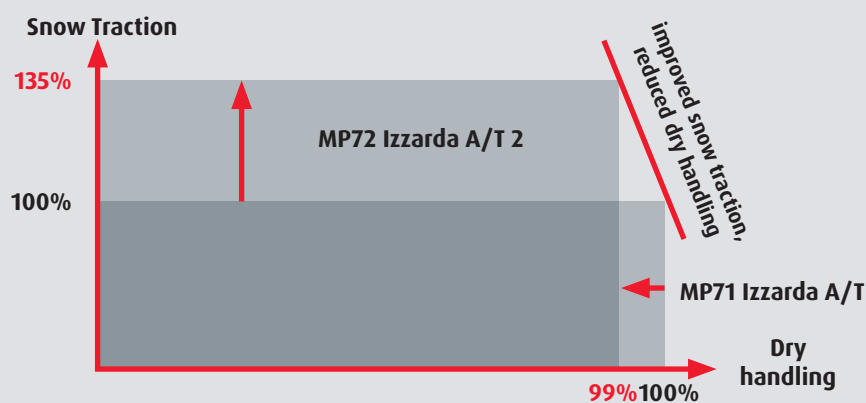


## Size Range

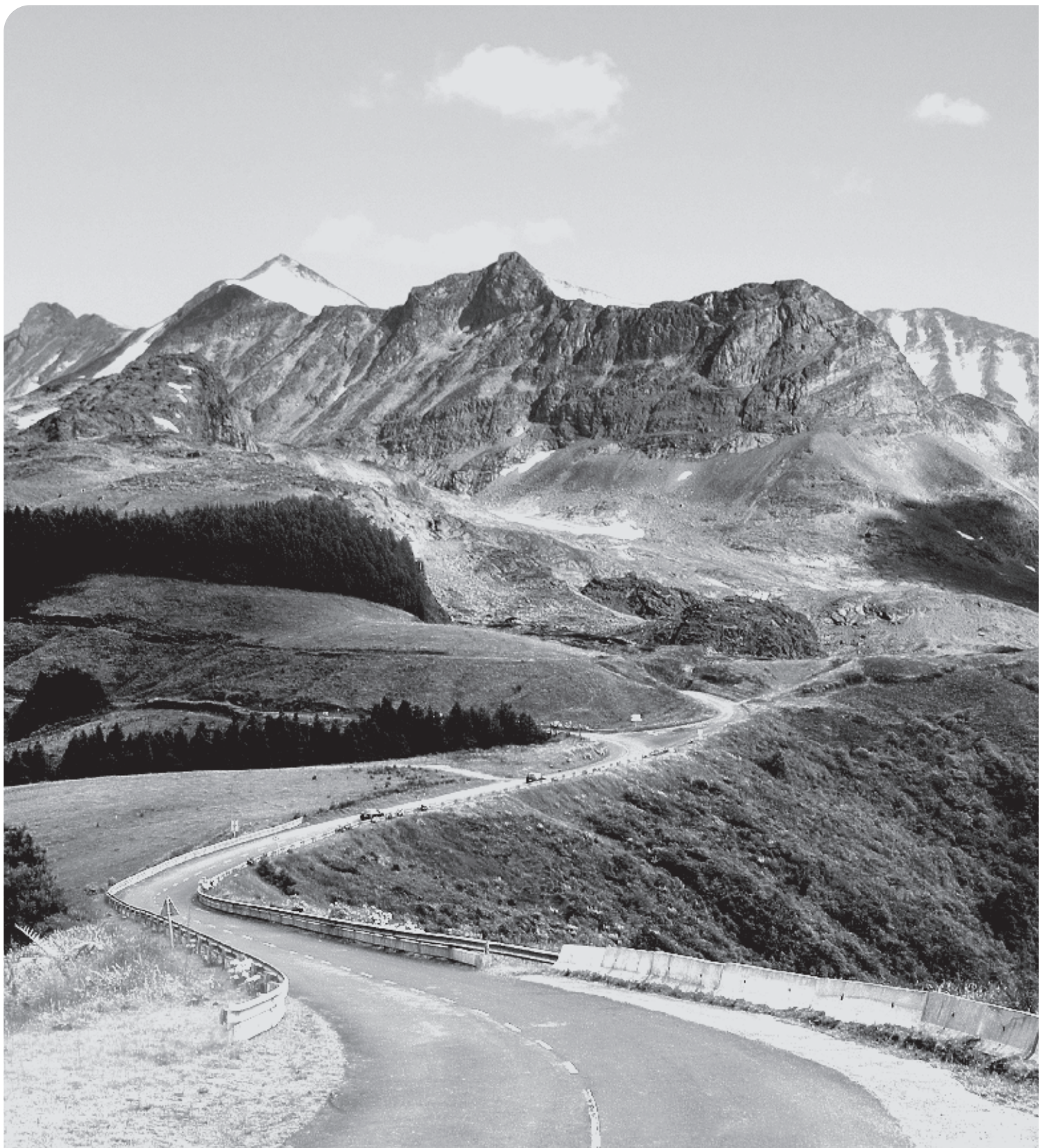
Size	LI	SI	XL	FR	EU tyre label					
					Fuel Efficiency	Wet Grip	dB	Noise	Snow Grip	Ice Grip
235/75 R 15	109	T	XL	FR	E	D	72	B	X	
205/70 R 15	96	T		FR	E	D	72	B	X	
205 R 16	110/108	S		FR	E	B	75	B	X	
205/80 R 16	104	T	XL	FR	D	D	72	B	X	
225/75 R 16	108	H	XL	FR	D	D	72	B	X	
215/70 R 16	100	T		FR	E	D	72	B	X	
225/70 R 16	103	H		FR	E	D	72	B	X	
235/70 R 16	106	H		FR	D	D	72	B	X	
245/70 R 16	111	H	XL	FR	D	D	72	B	X	
255/70 R 16	111	T		FR	E	D	73	B	X	
265/70 R 16	112	T		FR	D	D	73	B	X	
215/65 R 16	98	H		FR	E	D	72	B	X	
225/65 R 17	102	H		FR	E	D	72	B	X	
235/65 R 17	108	H	XL	FR	D	D	72	B	X	
255/65 R 17	110	H		FR	D	D	73	B	X	
265/65 R 17	112	H		FR	D	D	73	B	X	
215/60 R 17	96	H		FR	E	D	72	B	X	
225/60 R 18	104	H	XL	FR	D	D	72	B	X	
255/60 R 18	112	H	XL	FR	D	D	73	B	X	
265/60 R 18	110	H		FR	E	D	73	B	X	
255/55 R 19	111	H	XL	FR	D	D	73	B	X	
275/45 R 20	110	H	XL	FR	D	D	73	B	X	
275/40 R 20	106	H	XL	FR	D	D	73	B	X	

## Graph № 2

Achieving a significant improvement in traction even on snowy roads leads to slight drop in dry handling performance.



EU tyre label categories: = Fuel Efficiency, = Wet Grip, = Value in decibels, = Noise, = Snow Grip, = Ice Grip  
 XL = EXTRA LOAD - tyre with increased loadability | FR = Rim protection | LI = Load index | SI = Speed index



Your tyre specialist:

[www.matador-tyres.com](http://www.matador-tyres.com)

Matador. A brand of Continental.

 **Matador**<sup>®</sup>